



JMO 中揚光電股份有限公司

Zhong Yang Technology Co., Ltd

Stock Code: 6668

Zhong Yang Technology Co., Ltd.

Tel 886-4-23597888
<http://www.jmo-corp.com>

台中市南屯區寶山里工業區二十二路21號
No.21, Gongyequ 22nd Rd., Nantun Dist.,
Taichung City 408, Taiwan (R.O.C.)

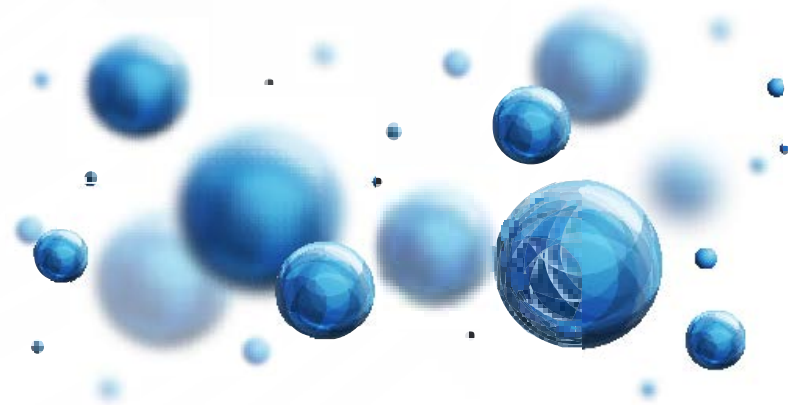


Agenda

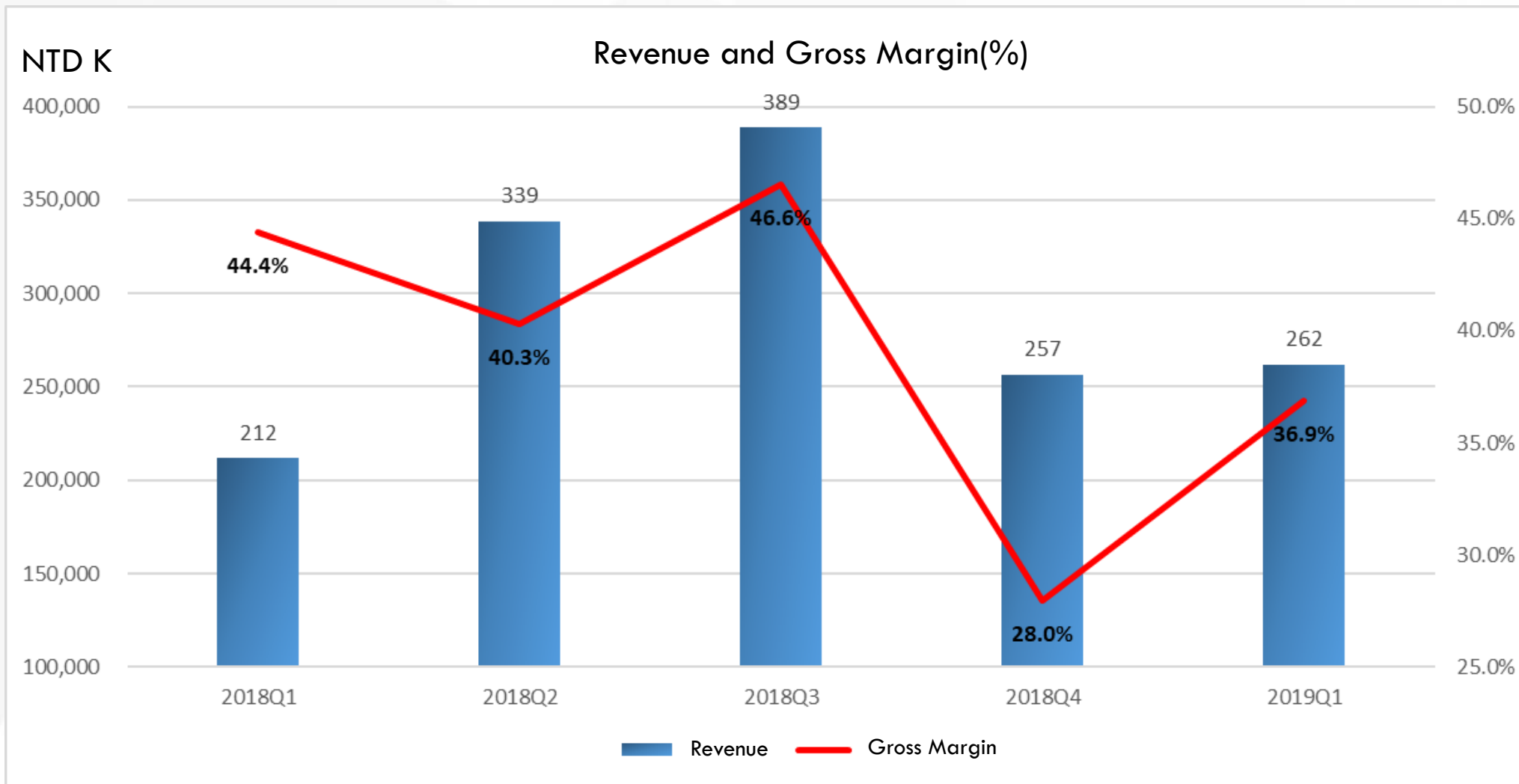
1. Financial Report

2. Development Strategies

3. Q&A

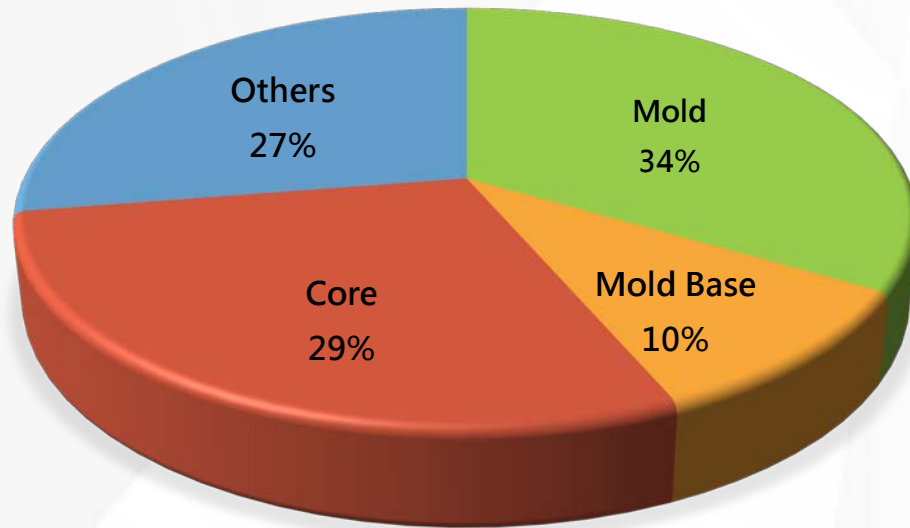


Revenue and Gross Margin(%)

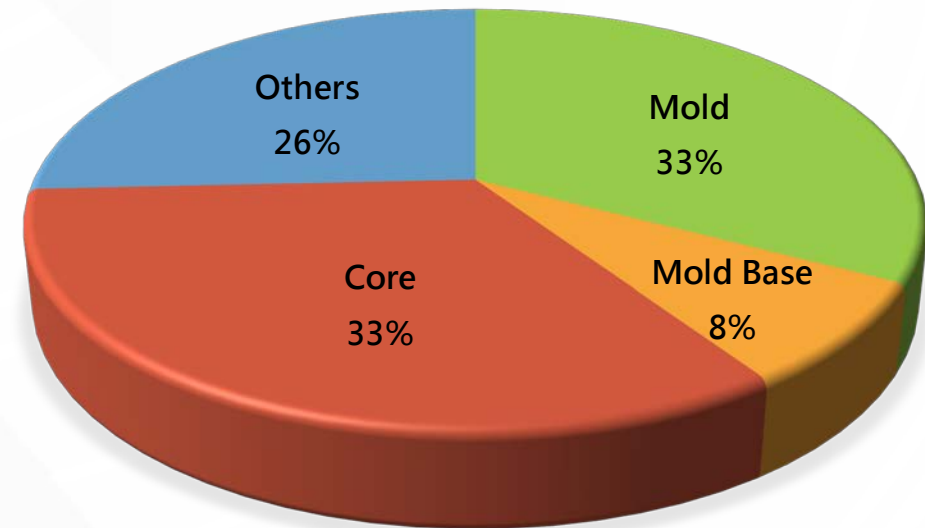


Main Products(%)

2018

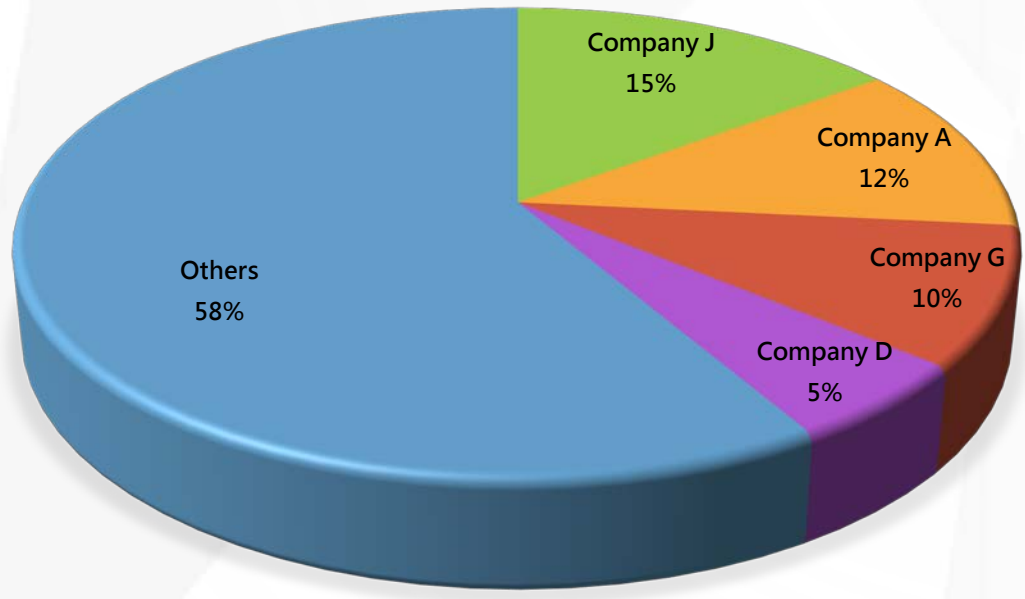


2019Q1

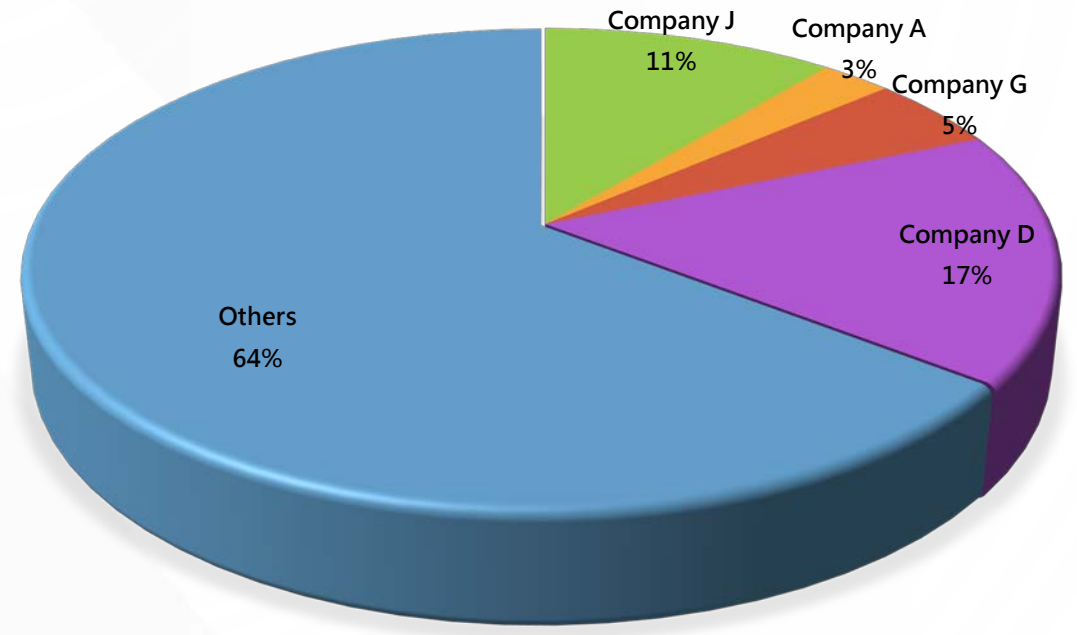


Main Costumers(%)

2018



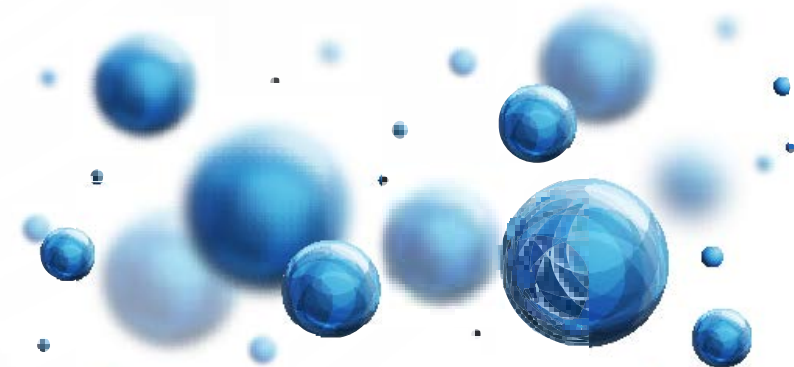
2019Q1



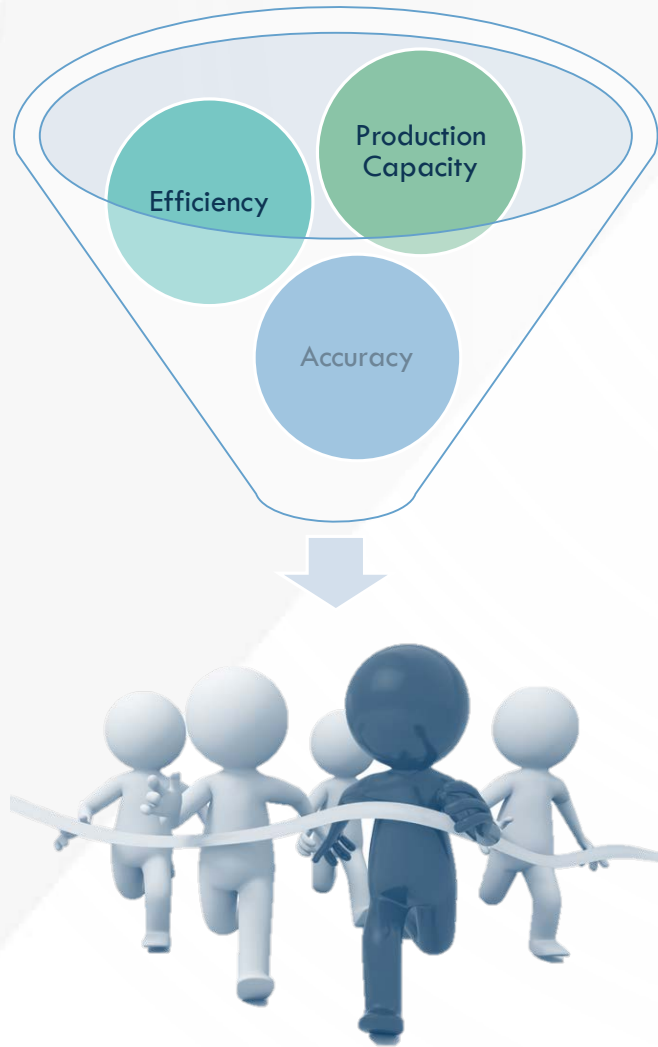
1. Financial Report

2. Development Strategies

3. Q&A



Mold



Higher Production Capacity

DTM

Mold designing software modularization

Vertically integrated design and manufacturing process

Higher Precision Quality of Mold

Coordinate Measuring Machine

Reliability analysis software-CAE

Lens for Vehicles

- Capability of Molding glass manufacturing(JMO)
- Automated Assembly
- Reliability Test

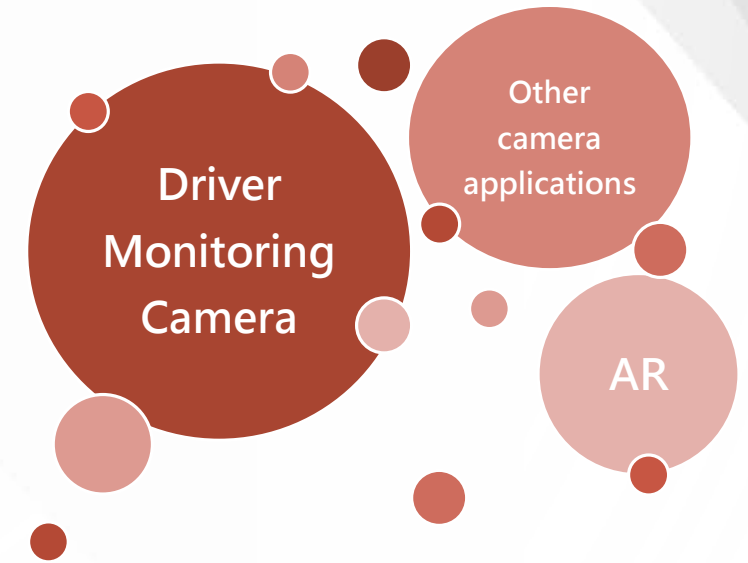


2019/01

Obtained the IATF 16949 certification

Develop new customers in Europe and Japan

Provide sample to Tier1 customers



Molding Glass

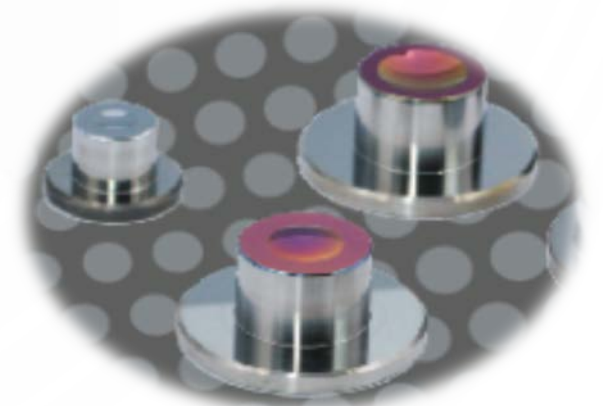
Business

- Supply Eterge with molding glass lens
- Develop Japanese customers (increase for 40% or more)



Technical

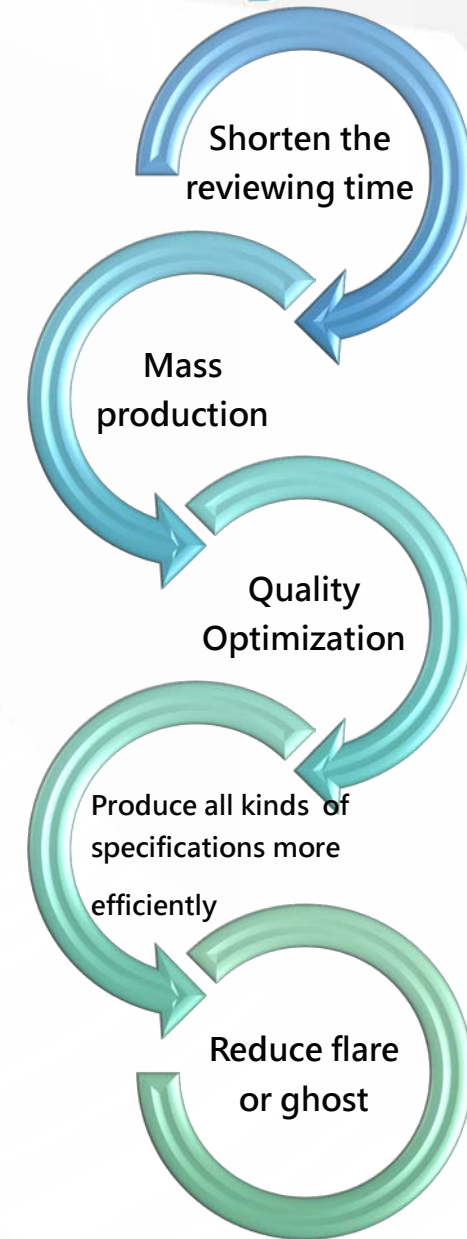
- Reduce the production cost of lens
- Improve the accuracy of lens
- Develop the highest and smallest outer diameter of lens



Non-cellphone lens

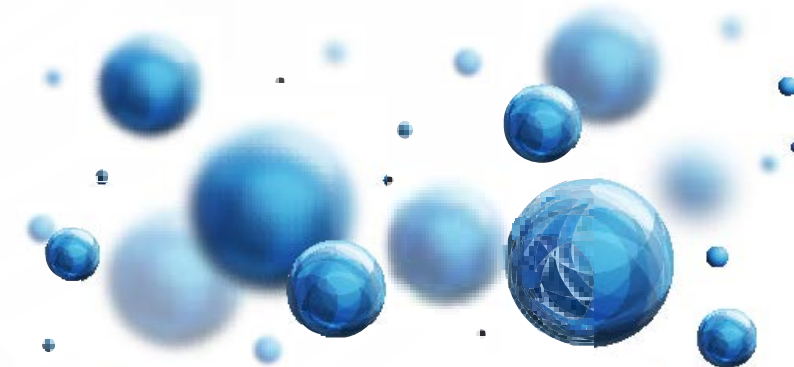


- ✓ Lens feasibility by AI introduced
- ✓ Assembly Programming
- ✓ Set up lens data base
- ✓ Coating Modularization



1. Financial Report
2. Development Strategies

3. Q&A



Q&A





Thank
you!

中揚光電