



JMO 中揚光電股份有限公司

Zhong Yang Technology Co., Ltd

Stock Code : 6668

Presenter : Deve Lee, CEO

Tel 886-4-23597888
<http://www.jmo-corp.com>

台中市南屯區寶山里工業區二十二路21號
No.21, Gongyequ 22nd Rd., Nantun Dist.,
Taichung City 408, Taiwan (R.O.C.)

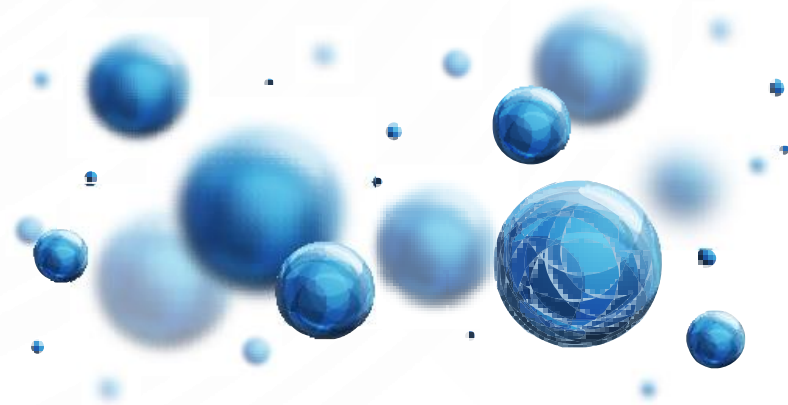


Agenda

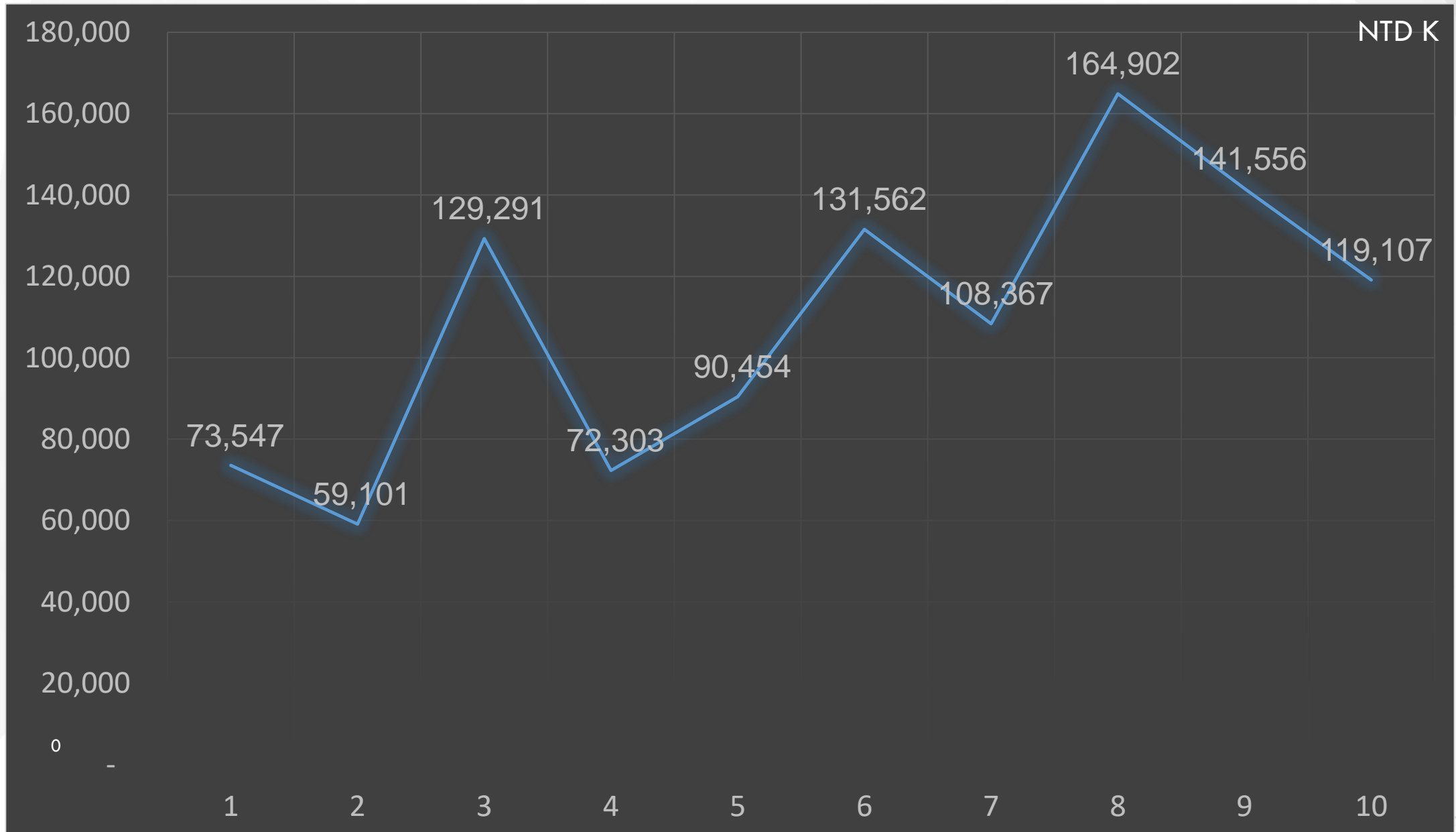
1. Financial Report

2. Development Strategies

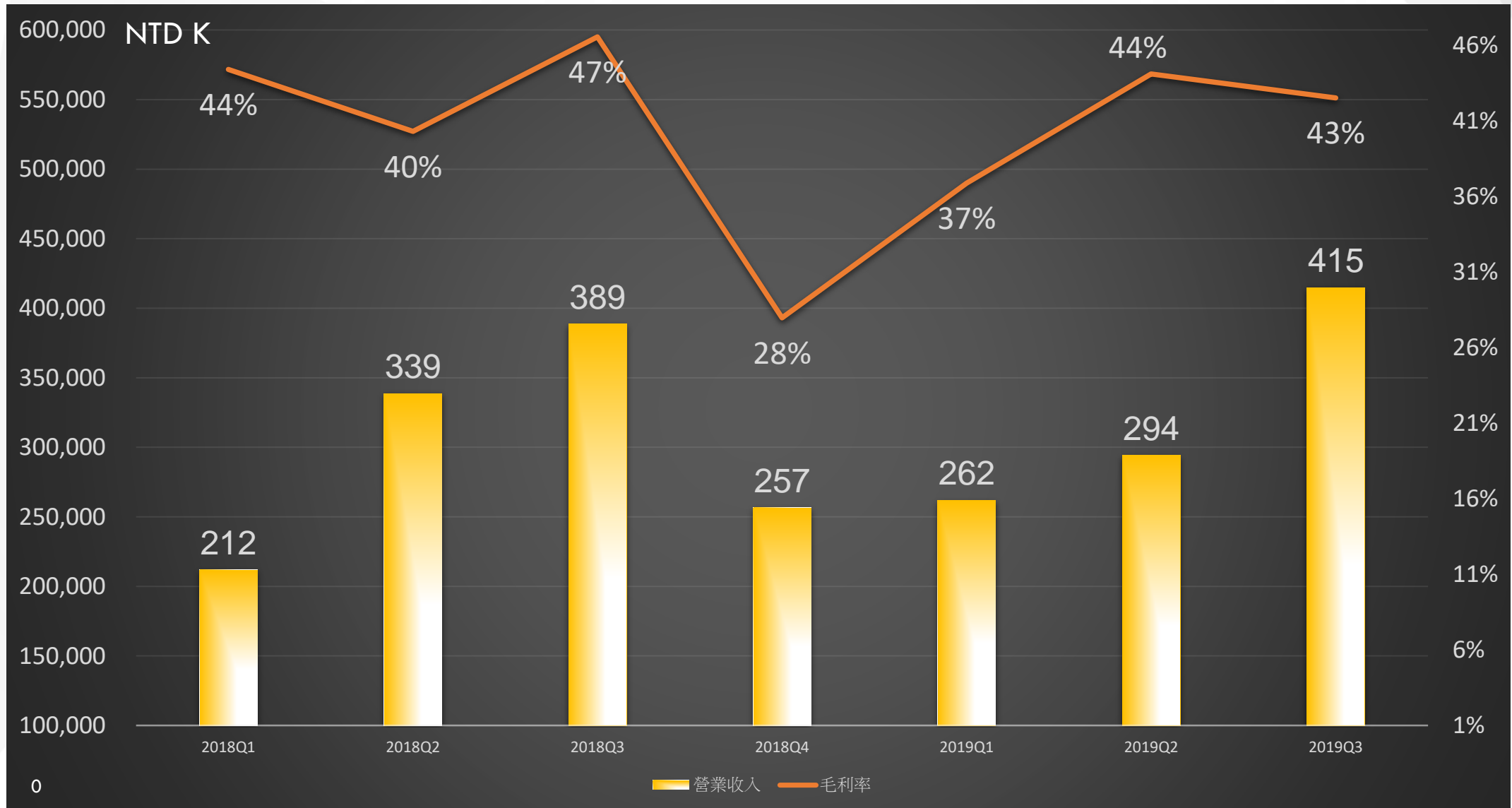
3. Q&A



Monthly Revenue for 2019



2018&2019 Quarterly Revenue and Gross Profit Margin



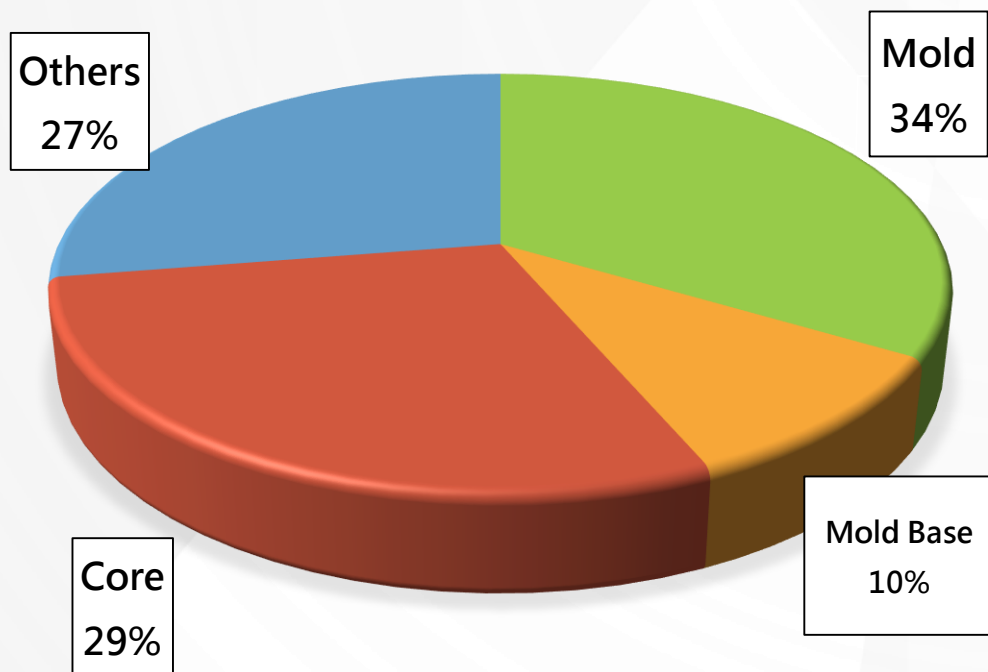
2018&2019 Income Statements

NTD K

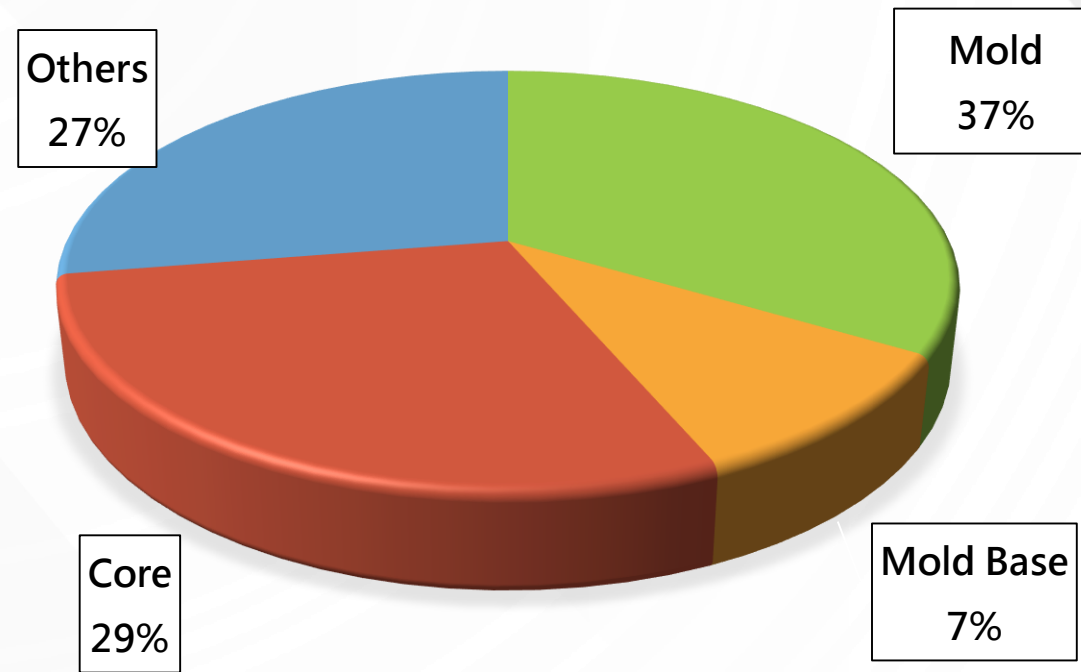
NTD K	2018Q1	2018Q2	2018Q3	2018Q1 ~Q3	2019Q1	2019Q2	2019Q3	2019Q1 ~Q3
Sales	211,744	338,718	388,772	939,234	261,939	294,319	414,825	971,083
COGS	117,722	202,226	207,797	527,745	165,328	164,527	238,443	568,298
Gross profit	94,022	136,492	180,975	411,489	96,611	129,792	176,382	402,785
Operating expenses	52,922	52,331	86,651	191,904	86,885	94,616	74,666	256,167
Operating profit	41,100	84,161	94,324	219,585	9,726	35,176	101,716	146,618
Non-op profit	(2,576)	9,677	(9,949)	(2,848)	5,983	(724)	(15,428)	(10,169)
Pre-tax profit	38,524	93,838	84,375	216,737	15,709	34,452	86,288	136,449
Income tax	11,761	29,735	23,597	65,093	11,823	5,635	19,654	37,112
Net income attributable to the parent	26,763	64,103	60,778	151,644	3,886	28,817	66,634	99,337
Basic EPS	0.45	1.07	1.01	2.53	0.05	0.43	0.98	1.46

Sales Revenue of Main Products

2018

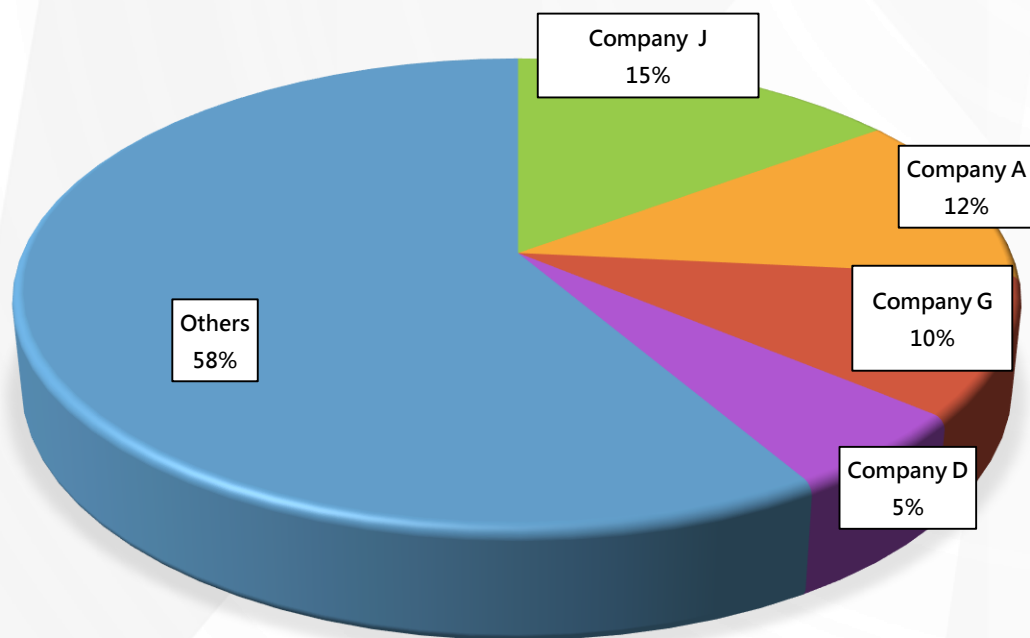


2019Q1~Q3

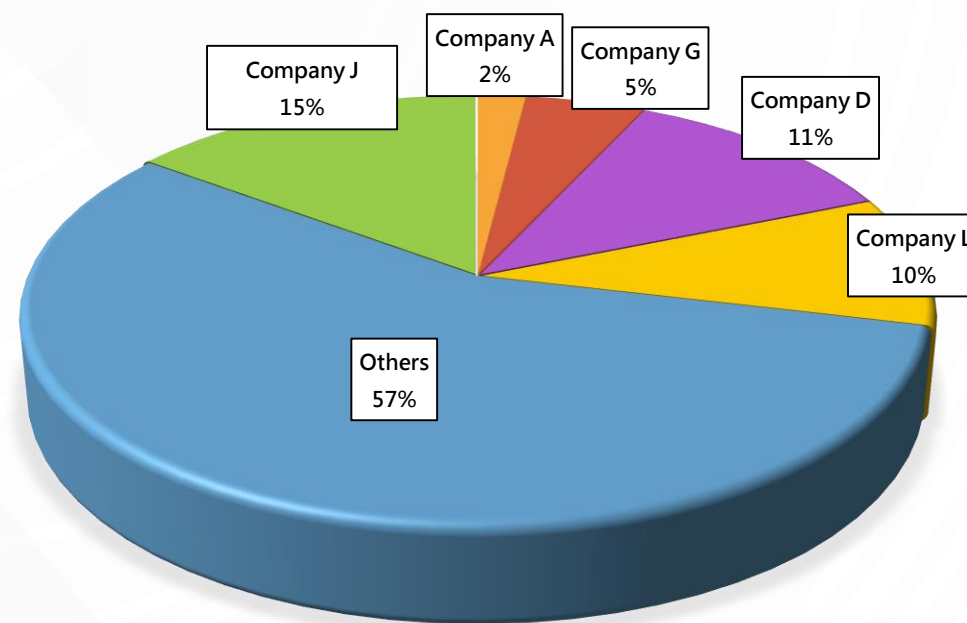


Sales Revenue of Main Customers

2018



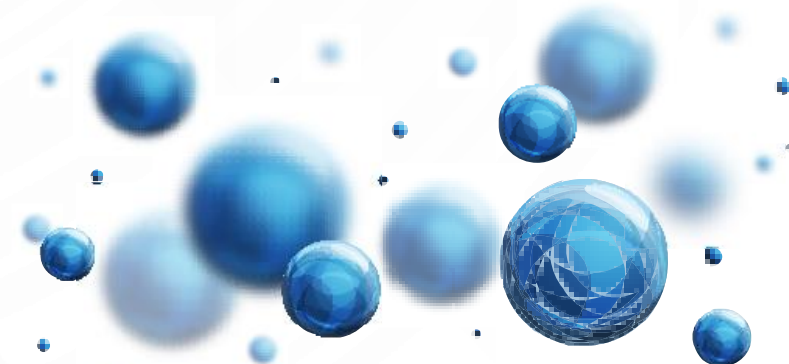
2019Q1~Q3



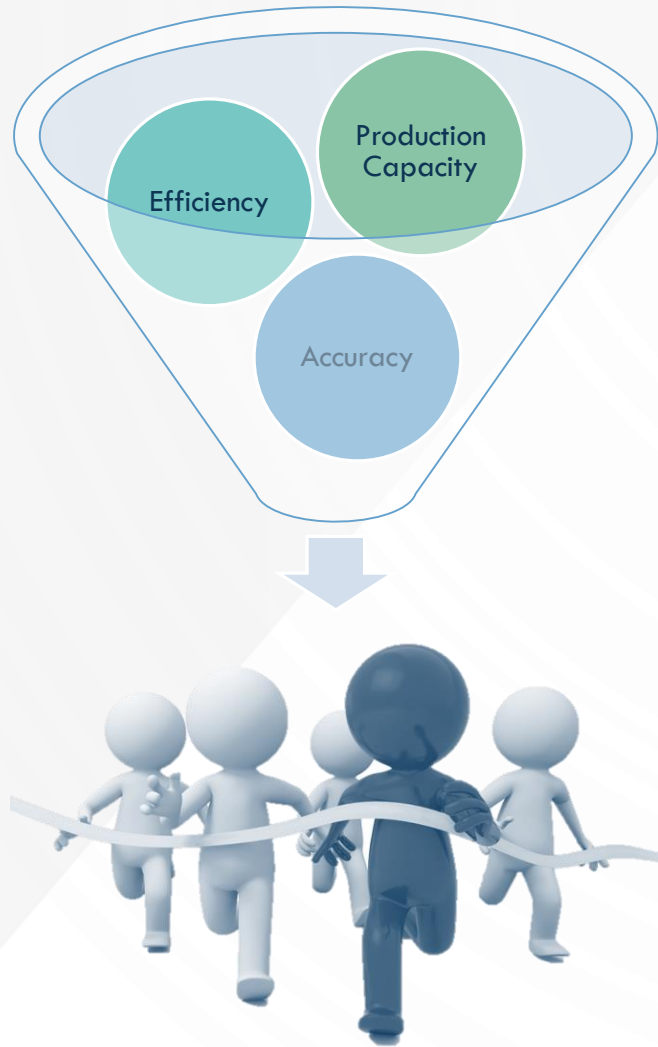
1. Financial Report

2. Development Strategies

3. Q&A



Mold



Mold processing accuracy improvement

ULC/ULG

Mold designing software modularization

Vertically integrated design and manufacturing process

The highest precision of equipments

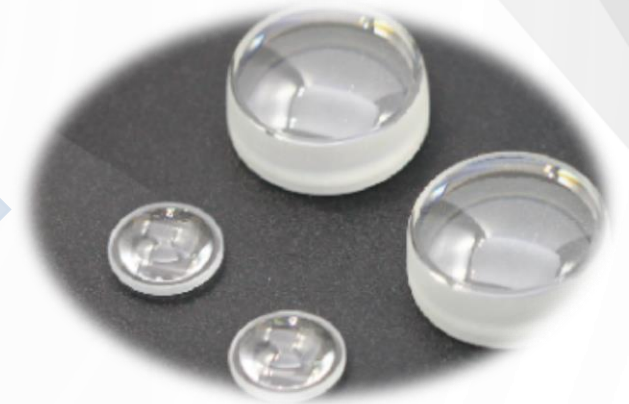
coordinate measuring machine

Reliability analysis software-CAE

Molding Glass

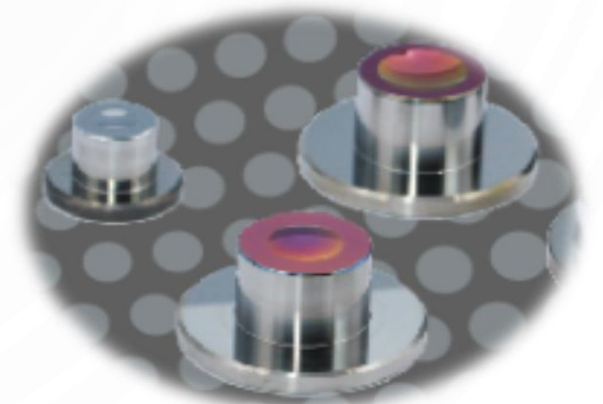
Business side

- Supply molding glass lens
- Develop Japanese customers
(increase performance for 40% more)



Technical side

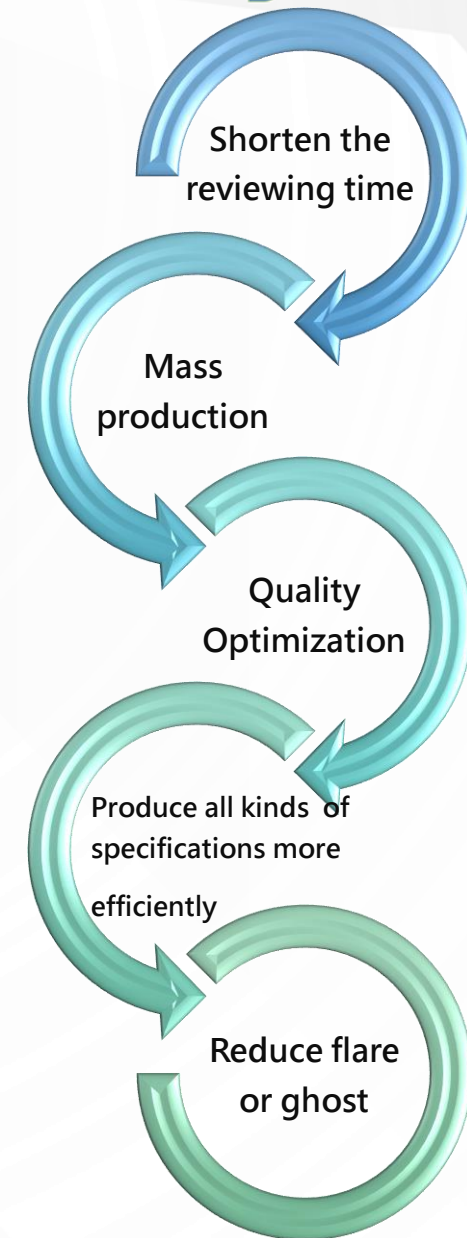
- Reduce the production cost of lens
- Improve the accuracy of lens
- Lens development towards extreme and very small outer diameter



非手機鏡頭發展



- ✓ Lens feasibility by AI introduced
- ✓ Assembly Programming
- ✓ Set up lens data base
- ✓ Coating Modularization



LENS DEVELOPMENT CATEGORY



Lens for Vehicle



Lens for CCTV



Lens for Projector

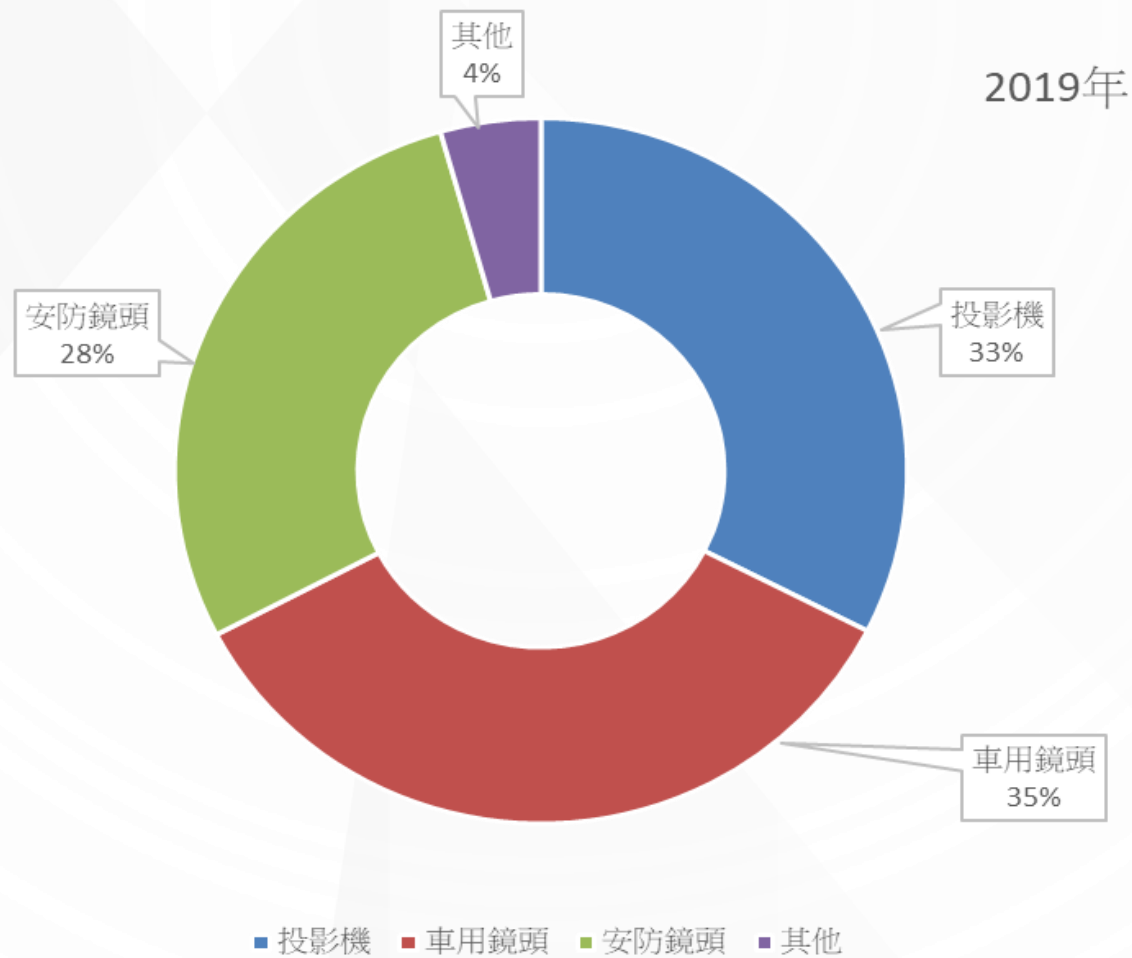


Consumer Lens



Others

PRODUCT SALES PORTFOLIO



Lens for Vehicles

- Capability of Molding glass manufacturing(JMO)
- Automated Assembly
- Reliability Test

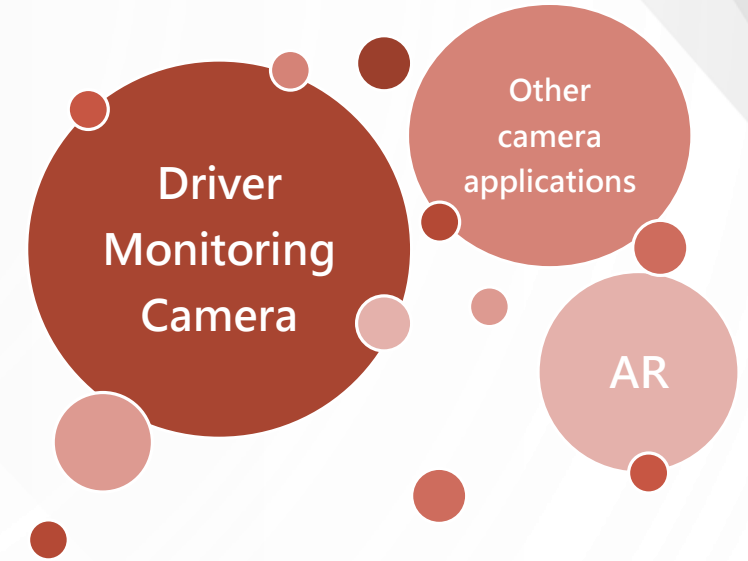


Connect with Tier 1

Develop new customers in Europe and Japan

2019/01

Obtained the IATF 16949 certification



CERTIFICATE OF IATF 16949

CERTIFICATE



Reg. Number	17613 - T		
First issue date	2019-01-22	Last change date	2019-01-22
Valid Until	2022-01-21	IATF Number	0348924

Quality Management System Certificate
IATF 16949:2016

We certify that the Quality Management System of the Organization:

絨立光電股份有限公司

Is in compliance with the standard IATF 16949:2016 for the following products/services:

光學鏡片、鏡頭組的設計與製造經由組裝等操作。

Chief Operating Officer
Giampiero Belcredi



Exclusions: None

This certificate is issued in conformity with IATF Rules – Fifth Edition.
Maintenance of the certification is subject to annual survey and dependent upon the observance of Kiwa Cermet Italia contractual requirements.


This certificate is composed of 1 page.

Kiwa Cermet Italia S.p.A.
Società con socio unico,
soggetta all'attività di
dirigenza e coordinamento di
Kiwa Italia Holding Srl
Via Cadriano, 23
40057 Granarolo dell'Emilia
(BO)
Tel +39.051.459.3.111
Fax +39.051.763.382
E-mail: info@kiwacermet.it
www.kiwa.it

絨立光電股份有限公司
Certified Sites
- 台中市南屯區工業區二十二路21號4樓



CERTIFICATE



Reg. Number	17613 - T		
First issue date	2019-01-22	Last change date	2019-01-22
Valid Until	2022-01-21	IATF Number	0348924

Quality Management System Certificate
IATF 16949:2016


We certify that the Quality Management System of the Organization:

Etege Opto-Electronics Co., LTD.

Is in compliance with the standard IATF 16949:2016 for the following products/services:

Design and Manufacturing of Optical Lens, through an integrated production process based on assembly operations.

Chief Operating Officer
Giampiero Belcredi




Exclusions: None

This certificate is issued in conformity with IATF Rules – Fifth Edition.
Maintenance of the certification is subject to annual survey and dependent upon the observance of Kiwa Cermet Italia contractual requirements.

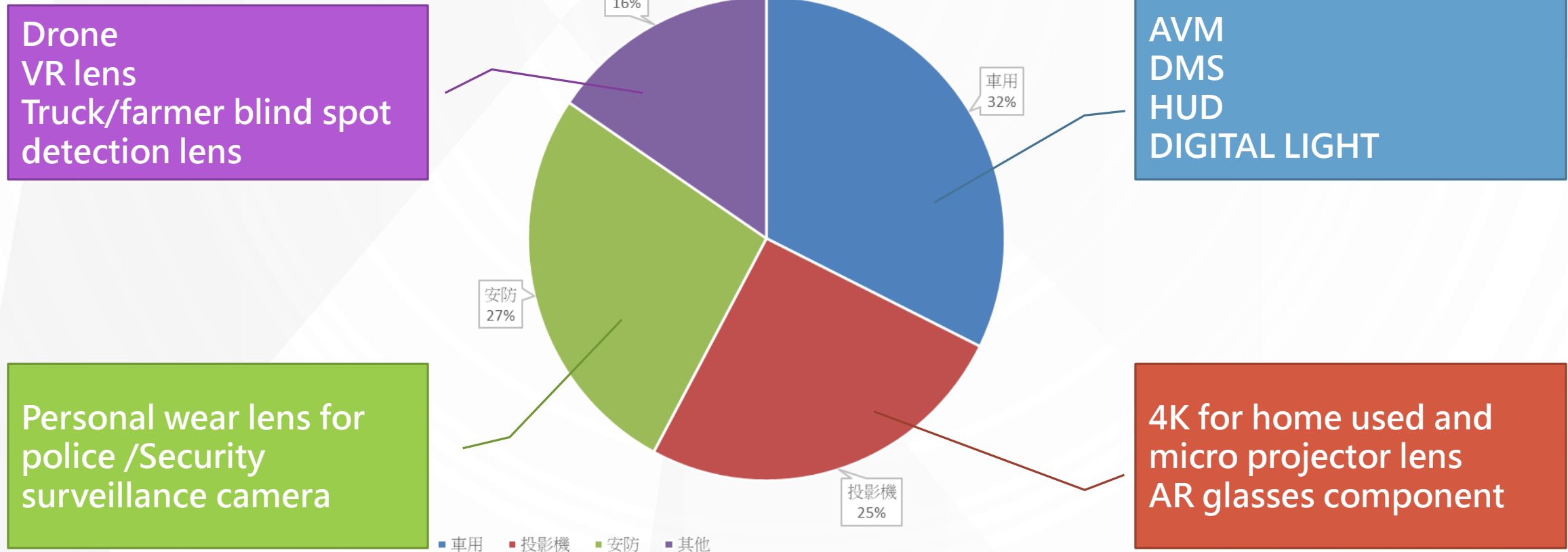
This certificate is composed of 1 page.

Kiwa Cermet Italia S.p.A.
Società con socio unico,
soggetta all'attività di
dirigenza e coordinamento di
Kiwa Italia Holding Srl
Via Cadriano, 23
40057 Granarolo dell'Emilia
(BO)
Tel +39.051.459.3.111
Fax +39.051.763.382
E-mail: info@kiwacermet.it
www.kiwa.it

Etege Opto-Electronics Co., LTD.
Certified Sites
- 4F., No. 21, Gongyequ 22nd Rd., Nantun Dist., Taichung City 40850 – Taiwan (R.O.C.)

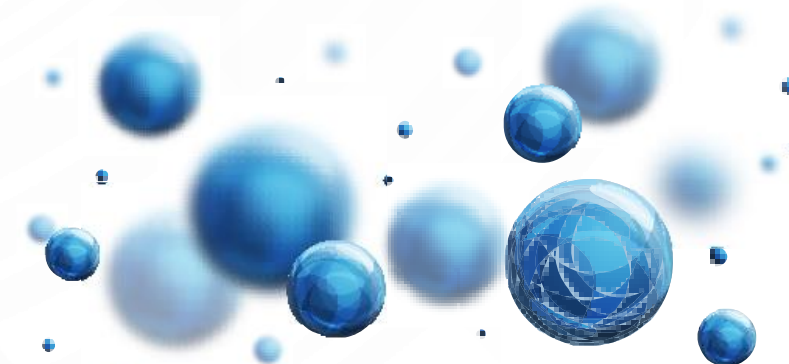


SALES MIX ESTIMATE IN 2020



1. Financial Report
2. Development Strategies

3. Q&A



Q&A





JMO

中揚光電

Thank
you!